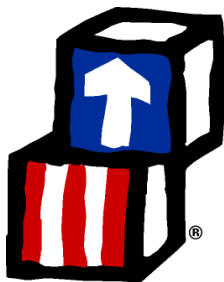




Head Start Annual Report

2017-2018

Mission: Achieving educational excellence for all learners through strong partnerships, service and leadership.



Educational Service Unit 13 Head Start Programs

4215 Avenue I

Scottsbluff, NE 69361

www.esu13.org

308-633-3712

Table of Contents

Director's Report	3
The Head Start Program	4
Service Area	5
Families by Income	6
Children Served	6
Funded Enrollment by Center	6
Audit Report	7
Proposed Budget	7
Family Outcomes	8
Screening Summary	9
Curriculum	10
School Readiness	10
Kindergarten Transition	12
Parent Policy Council	12



Director's Report



The ESU #13 Head Start program is pleased to present you with the 2017-18 Annual Report.

This has been a successful and adventurous year as the majority of our Head Start classrooms transitioned from half day to 6 hour days. The expanded services reduced barriers and improved classroom attendance. Our first and foremost goal is the care and well-being of the children that are served through our partnerships and classrooms within our centers. The past year our program served 286 Head Start children and 88 Early Head Start Children. Our dedicated staff strive to provide the most nurturing environment conducive to the learning experiences that our children deserve.

When parents enroll their children in the ESU 13 Head Start Programs they can be assured their children will receive services stamped with approval from the U.S. Department of Health and Human Services. The monitoring review by the Office of Head Start (OHS) in March 2018 focused on the delivery of services, as well as the management systems that support services, accountability and fiscal integrity. Based on the information gathered during this review, ESU 13 Head Start Programs were found to have met the requirements of all applicable Head Start Program Performance Standards, laws, regulations and policy requirements.

The monitoring review also included the Classroom Assessment Scoring System (CLASS) observation in all preschool classrooms. The CLASS is used to measure the quality of teacher-child interactions in three main areas: Emotional Support, Classroom Organization and Instructional Support. ESU 13 Head Start classrooms scored above the 2017 national averages as the 2018 results are not yet available.

Our Head Start program builds School Readiness and future success. Investing in children is why we are committed to providing comprehensive services with excellence. We continue to strive for excellence in all areas of the program and with the continued support from the community and our partnerships, the Head Start Programs will continue to be a success. We look forward to another great year in 2018-19.

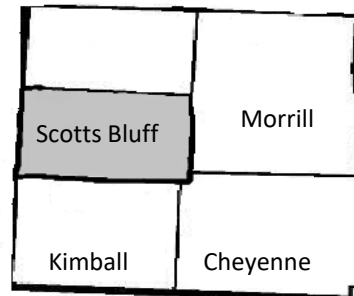
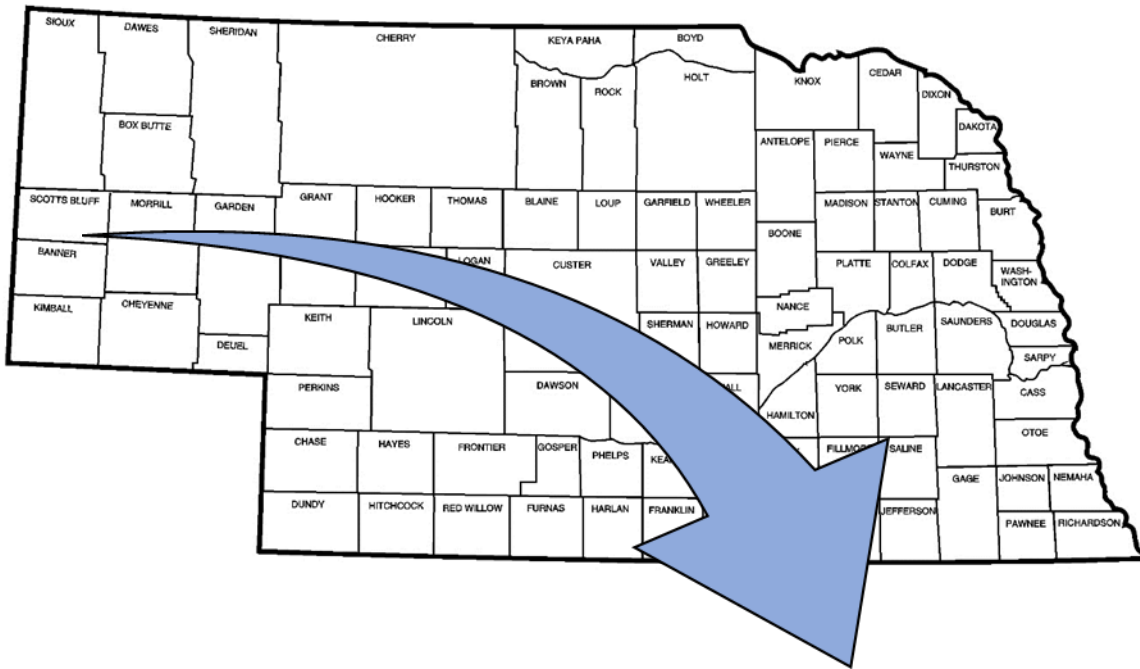
The Head Start Program

Head Start Programs provide comprehensive child development and family support services to low-income children and their families. Both Early Head Start, serving pregnant women and children ages birth to 3, and Head Start, serving children ages 3-5, ensure that enrolled children receive adequate nutrition, medical and dental care, social/emotional engagement interventions when appropriate to their age, and a developmentally appropriate education. The programs also place substantial emphasis on the involvement of parents/guardians in the lives of their children through home visits, parent leadership positions (Policy Council, Parent Committees, etc.) and social events. Head Start programs ensure that some of our community's neediest children receive the care and education necessary to meet their developmental milestones, are ready to enter school, and are prepared for a lifetime of productive learning.

Head Start services are delivered through home based prenatal, home based early education, center based early childhood education, center based preschool, and preschool partnerships. Children receiving center based services also receive regular services in their home through teacher visits and Family Advocates. The program reaches out to the high need members of the community it serves through partnerships, advertisements, community events, word of mouth, and door-to-door recruitment. Head Start and Early Head Start focus on the parents as the primary teachers and strive to promote that message through child and family education.



Service Area



Educational Services Unit #13 Early Head Start program is funded to serve 68 participants from prenatal to age 3, and the Head Start program to serve 248 children from age 3 to age 5 in 4 western Nebraska panhandle counties: Scotts Bluff, Morrill, Kimball, and Cheyenne.

Families by Income

Category	Head Start		Early Head Start	
	# Children	%Children	# Children	% Children
Foster	13	5%	10	11%
Public Assistance	28	10%	5	6%
Income <100% Poverty	135	47%	55	63%
Income 100%>130% Poverty	56	20%	8	9%
Over Income	24	8%	2	3%
Homeless	30	10%	8	9%
Total Children Served	286		88	

Total Children Served

	Total Children Served	Average Monthly Enrollment
Head Start	288	99%
Early Head Start	88	99%

Funded Enrollment by Center

Bayard Partnership	10
Bridgeport	20
Central	18
Home Base Early Head Start	20
Gering	26
Health and Family Resource Center (EHS)	40
Kimball	18
Minatare Pre-Start Partnership	10
Mitchell Tiger Cub Preschool Partnership	18
Scottsbluff Bear Cub Partnership	10
Sidney	18
Tri-Community Preschool–Morrill Partnership	16
Western Nebraska Child Development Center	84
WNCDC Infant/Toddler Partnership	8
Total	316

Audit Report

Educational Service Unit No. 13 (ESU 13) is the grantee organization for the Head Start programs, receiving federal funds from the Administration of Children and Families through the Department of Health and Human Services. The Nebraska Auditor of Public Accounts conducted an independent audit of the financial statements and activities of ESU 13 for the year ended August 31, 2017. The results of that audit can be found on the website for the Nebraska Auditor of Public Accounts, www.auditors.state.ne.us.

2017-2018 Budget

FEDERAL SHARE						
	Head Start		Early Head Start		TOTAL	
	Proposed	Actual	Proposed	Actual	Proposed	Actual
Personnel	\$ 1,170,240	\$ 1,240,847	\$ 617,329	\$ 611,201	\$ 1,787,569	\$1,852,048
Fringe Benefits	\$ 325,119	\$ 284,311	\$ 167,255	\$ 137,105	\$ 492,374	\$421,416
Travel	\$ 10,253	\$ 11,832	\$ 5,860	\$ 5,620	\$ 16,113	\$17,452
Equipment	\$ 0	\$ 0	\$ 0	\$ 9,657	\$ 0	\$9,657
Supplies	\$ 53,676	\$ 29,531	\$ 28,616	\$ 71,330	\$ 82,292	\$100,861
Contractual	\$ 155,393	\$ 144,985	\$ 37,300	\$ 29,394	\$ 192,693	\$174,379
Other	\$ 172,656	\$ 192,884	\$ 104,807	\$ 104,233	\$ 277,463	\$297,117
Indirect Costs	\$ 88,088	\$ 71,035	\$ 57,332	\$ 39,258	\$ 145,420	\$110,293
Total	\$ 1,975,425	\$ 1,975,425	\$ 1,018,499	\$1,007,798	\$2,993,924	\$2,983,223

Non Federal Share	\$748,481.00
Administrative Costs	10.61% (includes NFS)

Family Outcomes

Head Start and Early Head Start Family Advocates and Home Educators work directly with families utilizing the Parent, Family, and Community Engagement Framework. Within the framework, there are 7 outcome areas that are the key focus areas for identifying needs, strengths, and recording growth with families. At least 73% of families who were served at any point of time during the program received family services based upon their interests and needs. 5% of families in the program received referrals to outside community agencies for additional services. Families who had a complete assessment also showed an overall average of growth in most areas.

These focus areas are:

- Family Well-Being
- Parent-Child Relationships
- Families as Lifelong Educators
- Families as Learners
- Family Engagement in Transitions
- Family Connection to Peers and Community
- Families as Advocates and Leaders



Families also work to set family goals that they would like to work on and achieve during the school year. 47% of families achieved the goals that they had set with their family advocate or home educator. Goals are set in relation to the needs identified in the 7 outcome focus areas.

Families participating in family gatherings, home visits, and center events had the opportunity to participate in many educational events including topics such as: Circle of Security parenting course, child safety including choking/CPR, Kindergarten readiness, family literacy, purchasing a home and financial budgeting, setting limits and the power of play for preschoolers, how to pursue adult education, healthy stress management, and increasing family nutrition to name a few. Centers also have worked to engage fathers more in their child's Head Start experience

through regular program activities as well as special events designed for father participation.

Services provided to children and families:

- 110 families received emergency services/crisis intervention
- 43 families were provided with adult education resources
- 209 families received parent education
- 6 families affected by incarceration received assistance
- 136 fathers/father figures participated in father involvement activities
- 89 children received special education and related services
- 653 individuals volunteered in our Early Head Start/Head Start programs

Screening Summary



ESU #13 Head Start and Early Head Start programs perform or coordinate many screenings: dental screenings and exams, hearing screenings, vision acuity tests and exams, speech screenings, socio-emotional screeners, and developmental screenings. Per 1304.14, subpart b of the Head Start Performance Standards, Head Start programs must ensure that a minimum of 10% of the total funded enrollment is filled with children eligible for services under IDEA.

For the 2017-2018 school year, ESU #13 Head Start program served 25% Head Start children on IEP's and Early Head Start served 30% children on IFSP's.

2017-2018 Screenings	Head Start	Early Head Start
Dental	100%	78%
Hearing	95%	93%
Vision	100%	88%
Speech	100%	n/a
Social-Emotional	100%	97%
Developmental	100%	97%

2017-2018 Exams	Head Start	Early Head Start
Physical	78%	77%
Dental	70%	82%

Curriculum

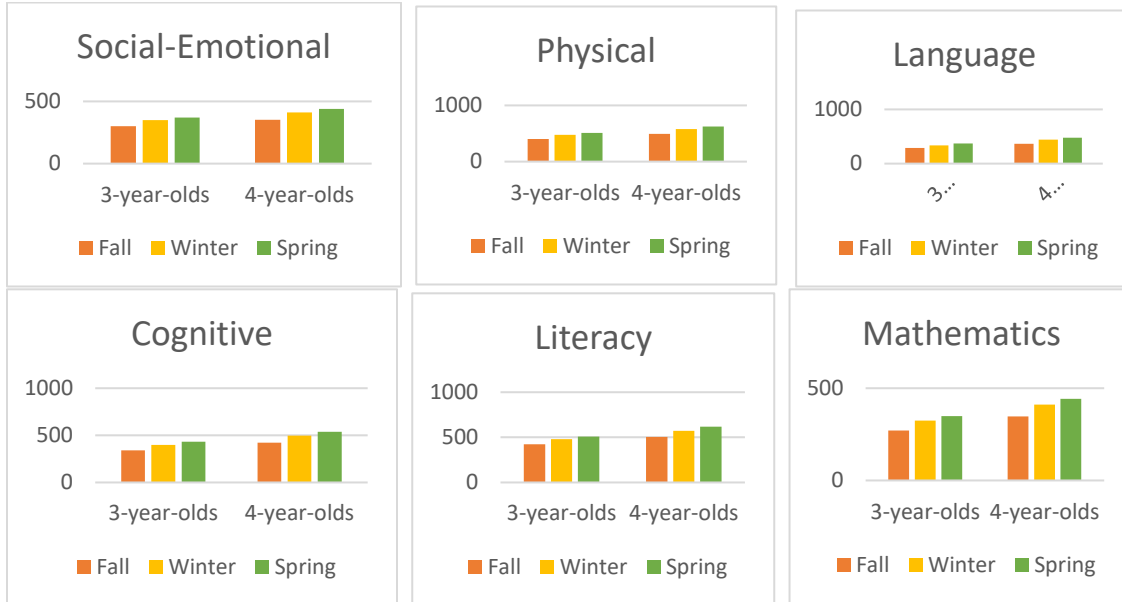
Head Start and Early Head Start use the Creative Curriculum and our Home Base option uses Parents as Teachers, both of which include active learning for our programs. The curriculums are research based and have a strong emphasis on teacher/parent responsiveness to children’s individual learning styles, as well as their strengths and interests. We know that children learn best when they are actively engaged and involved in interaction with people and materials in their environment. Some key objectives for children and/or parents in our program are to have fun and:

- To develop a positive self-image, to include becoming secure and independent.
- To learn how to get along with children of their own age.
- To have a wide range of experiences to
- To communicate his/her ideas to both adults and other children.
- To develop and coordinate large and small muscles.
- To express in a variety of creative areas: art, dramatic, music & literature.
- To develop in visual perception and auditory discrimination.

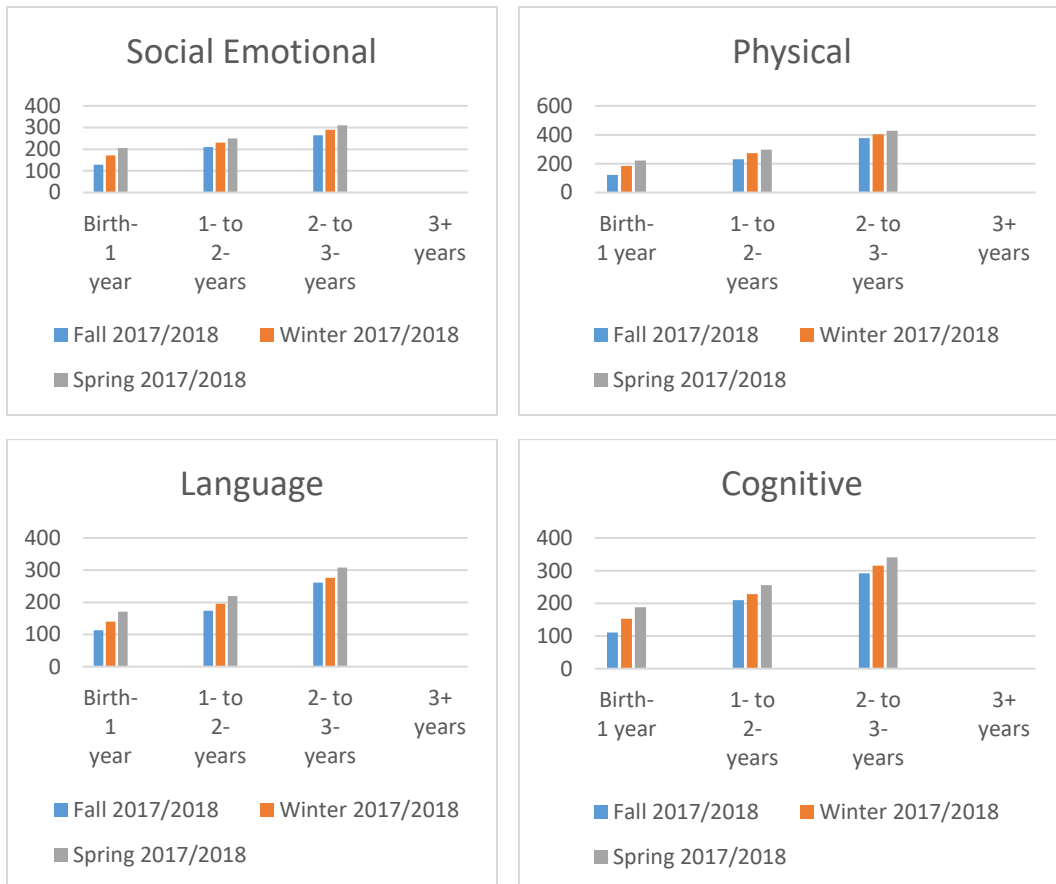
School Readiness

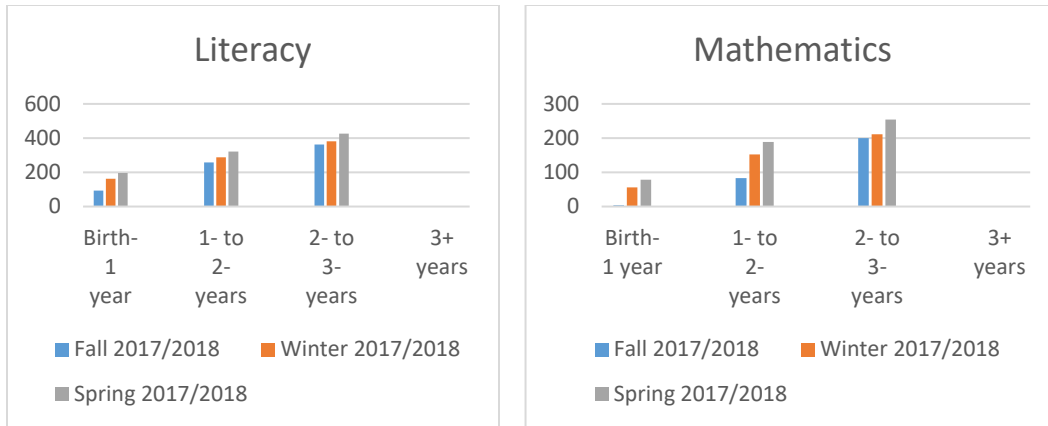
School Readiness the Office of Head Start defines as “children possessing the skills, knowledge, and attitudes necessary for success in school and for later learning and life.” Teachers work directly with children and families to promote children’s progress toward school readiness goals. Children made significant gains during the 2017-18 program year in all of the school readiness goal areas.

Head Start School Readiness Success 2017-18



Early Head Start School Readiness Success 2017-18





Kindergarten Transition

When a child enters the preschool program, staff work to provide consistency by placing the child in a classroom that best meets the child and family needs. The goal is that the child will remain in the same classroom with their original teachers throughout their time enrolled in preschool until they are ready to transition to kindergarten.

If transition to another center is necessary, or when children reach kindergarten age, staff will collaborate with parents, school districts, and others necessary, to implement strategies and activities to support successful transitions for children and their families to their new location, either within the HS program or the community.

The ESU #13 Head Start program strives for smooth kindergarten transition by working with parents and schools to help make that bridge successful. 119 children successfully transitioned to kindergarten for the 2018-19 school year.

Parent Policy Council

Policy council members were elected from all of our programs across our service area. They met monthly and shared in the decision making process regarding quality programming for themselves and their children. Thank you to the 2017-18 Early Head Start / Head Start Policy Council Members and special appreciation to the Policy council Officers:

Chairperson - Ashley Newhoff

Vice-Chairperson – Jessica Palomo

Secretary – Jennifer O’Hare